

Barcelona Sports LED Floodlight

Combining the latest in LED technology and precision designed optics, the Barcelona Sports LED Floodlight has been developed and designed for sports applications. Constructed using pressure die-cast aluminium, this highly efficient floodlight allows for both trunnion and remote gear tray mounting arrangements offering flexible installation options.

Application

Designed with IP66 ingress protection, IK08 impact protection rating and birdproof cabling, the Barcelona LED Sports Floodlight range is designed to withstand harsh Australian conditions and has been developed to operate at temperatures from -30°C to 40°C.

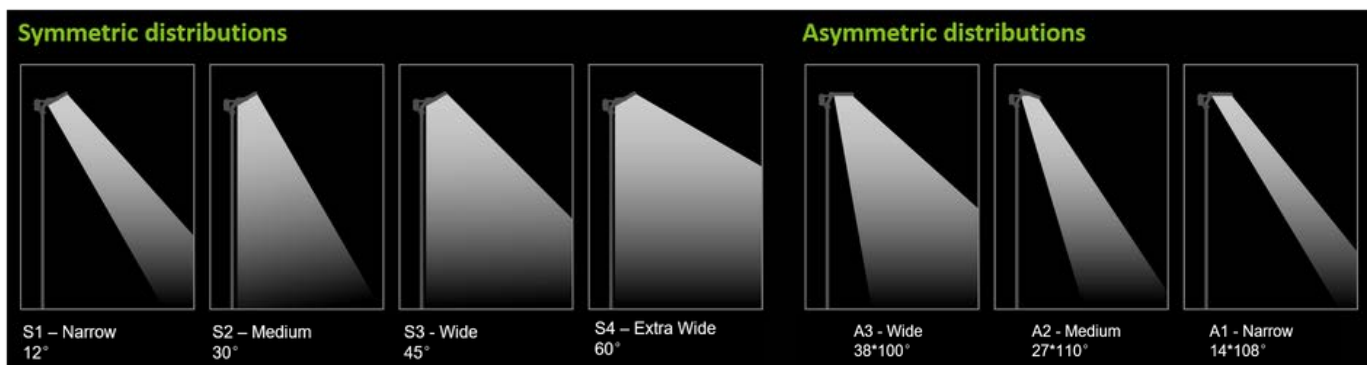
Suited to recreational sporting applications: Soccer, Rugby, Tennis, and all outdoor recreational sports.

Design Specifications

- Available in 600W/800W/1000W/1200W
- Maximum delivered lumens 192,000lm
- Available in CRI 70, 80 and 90
- 160lm/w efficacy
- UV stabilised polycarbonate lens with toughened glass screen
- Operating temperature -30°C to 40°C
- Control gear mounted to trunnion or remote (max 50m)
- Windage rating 0.09m²
- Front and rear adjustable glare shields available
- 20kV surge protection device fitted
- Aiming device available
- Birdproof cabling as standard
- Single phase and three phase available
- DALI2 as standard
- DMX available
- LED lifetime
 - L70 @ 178,000 hours
 - L80 @ 111,000 hours
 - L90 @ 53,000 hours



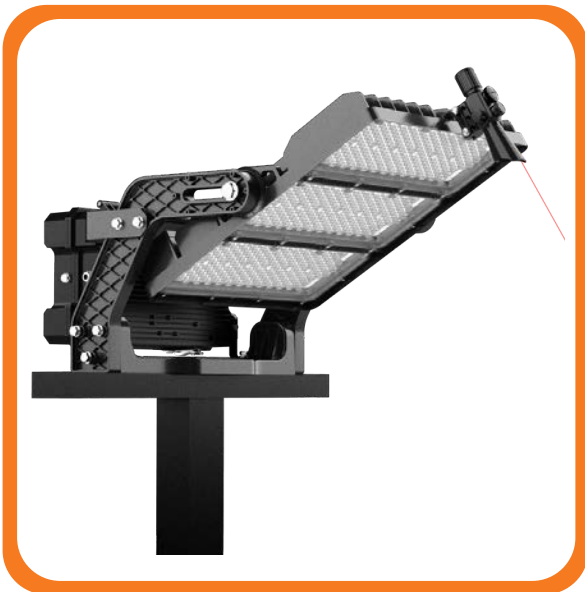
Photometric Data



*Front and rear glare shields available

Product Highlights

- Powder coated die-cast aluminium construction with excellent anti-corrosion protection
- Glare shields available for front and rear control



- Precision aiming device available
- Birdproof cable protection throughout

- Single module heatsink design
- IP66 rated floodlight and control gear



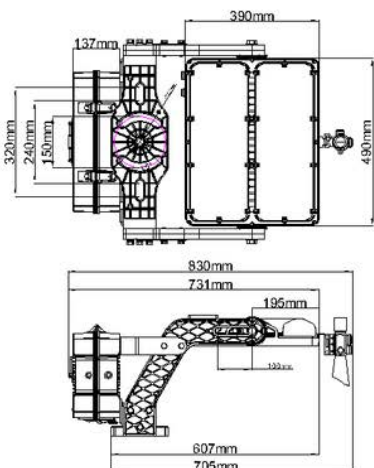
Model No. & Technical Specification

Model No.	Description	Power (W)	Lumens	CCT	CRI	Optic
FBC0657A1	Barcelona 600W with A1 narrow asymmetric optic, DALI	600	84,000	5700	70	A1 - Narrow
FBC0657A2	Barcelona 600W with A2 medium asymmetric optic, DALI	600	84,000	5700	70	A2 - Medium
FBC0657A3	Barcelona 600W with A3 wide asymmetric optic, DALI	600	96,000	5700	70	A3 - Wide
FBC0857A1	Barcelona 800W with A1 narrow asymmetric optic, DALI	800	112,000	5700	70	A1 - Narrow
FBC0857A2	Barcelona 800W with A2 medium asymmetric optic, DALI	800	112,000	5700	70	A2 - Medium
FBC0857A3	Barcelona 800W with A3 wide asymmetric optic, DALI	800	128,000	5700	70	A3 - Wide
FBC1057A1	Barcelona 1000W with A1 narrow asymmetric optic, DALI	1000	140,000	5700	70	A1 - Narrow
FBC1057A2	Barcelona 1000W with A2 medium asymmetric optic, DALI	1000	140,000	5700	70	A2 - Medium
FBC1057A3	Barcelona 1000W with A3 wide asymmetric optic, DALI	1000	160,000	5700	70	A3 - Wide
FBC1257A1	Barcelona 1200W with A1 narrow asymmetric optic, DALI	1200	168,000	5700	70	A1 - Narrow
FBC1257A2	Barcelona 1200W with A2 medium asymmetric optic, DALI	1200	168,000	5700	70	A2 - Medium
FBC1257A3	Barcelona 1200W with A3 wide asymmetric optic, DALI	1200	192,000	5700	70	A3 - Wide

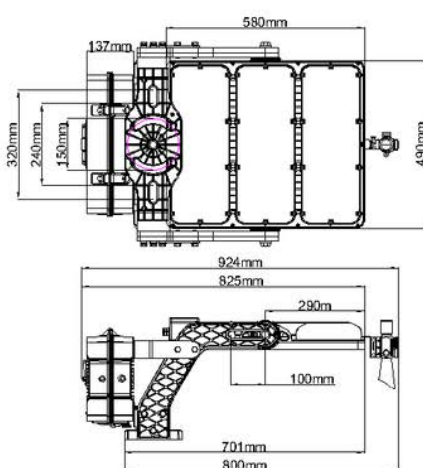
Code methodology: Add GS = Rear Glare Shield. FV = Front Visor. Alternate optics available on request.

Due to continued product and technology enhancements, data source from salcommercial.net.au shall not for part of any contract or performance guarantee unless expressly confirmed in writing by SAL at the time of order. Products are sold in accordance with [SAL Commercial Terms and Conditions of sale](#) and all images shown are for illustration purposes only and may vary from the actual colour or finish.

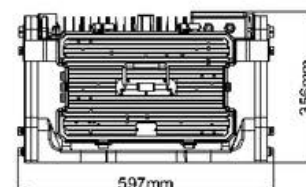
Product Dimensions



Barcelona Twin Module
- 600W / 800W
- 17kg * fitting only



Barcelona Three Module
- 1000W / 1200W
- 20.5kg * fitting only



DALI2 / DMX Control Gear
- Trunnion or remote mount
- 600W - 8.8kg
- 800W-1200W - 12.7kg



Windage

	Tilt angle	0°	15°	30°
1000W/1200W w/o control gear		0.091m ²	0.165m ²	0.244m ²
1000W/1200W w/control gear		0.2m ²	0.237m ²	0.283m ²



Product Images

